

I HERBY CERTIFY THAT THIS SURVEY, PLAN, OR REPORT WAS PREPARED BY ME OR UNDER MY DIRECT SUPERVISION, THAT THE UNITED STATES PUBLIC LAND SURVEY MONUMENT RECORD IS CORRECT AND COMPLETE TO THE BEST OF MY KNOWLEDGE AND BELIEF, AND THAT I AM A DULY LICENSED LAND SURVEYOR UNDER THE LAWS OF THE STATE OF MINNESOTA.

Jacob R. Cunningham 1-8-18
SIGNATURE DATE

JACOB R. CUNNINGHAM
 MN LICENSE NO. 49547

STATE OF MINNESOTA, } ss.
 COUNTY OF MURRAY, }

I hereby certify that the within Instrument was filed in this office for record on the 11TH day of JANUARY A.D. 20 18 at 9:00 o'clock A. M. and was duly recorded as Document No. _____

Guelyn C. Larson
 County Recorder

CERTIFICATE OF LOCATION OF GOVERNMENT CORNER

NORTH QUARTER CORNER OF SECTION 20, TOWNSHIP 106N RANGE 42W, 5TH P.M.

STATE OF MINNESOTA, COUNTY OF MURRAY

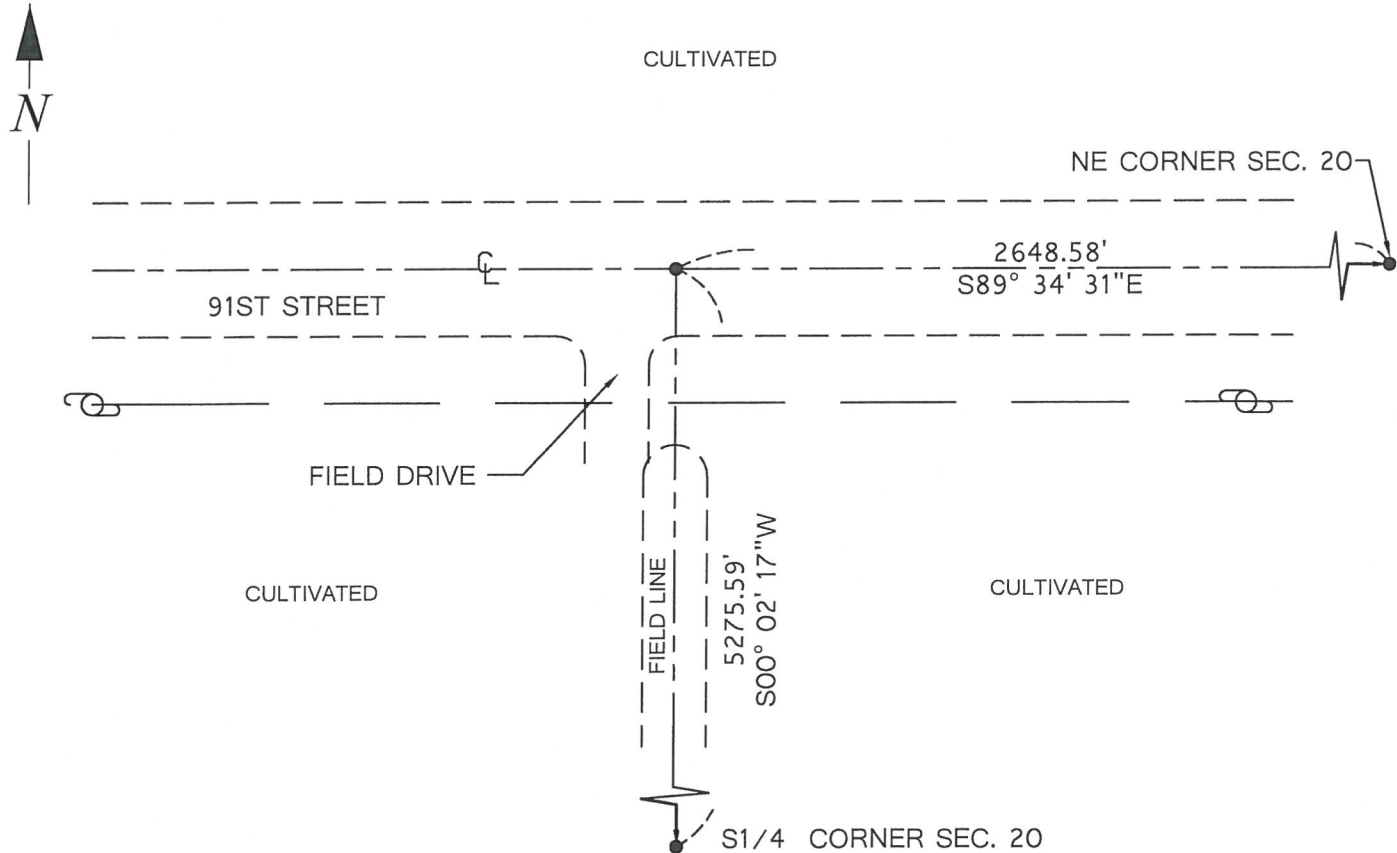
AT THE CORNER LOCATION SHOWN ON THE SKETCH: 5/8" REBAR W/CAP RLS 44563, DOWN 0.6 FT

ON 7-11-2017 FOUND A(N) FOUND 10"X12"X16" STONE, DOWN 4 FT, 1.9' FROM REBAR

LEFT MONUMENT AS FOUND, LOWERED MONUMENT, REMOVED MONUMENT (EXPLAIN)

ON 7-11-2017 PLACED A(N) 4" X 20" C.I.M., DOWN 0.8 FT, OVER TOP OF STONE

SKETCH OF REFERENCE TIES



NAD 83 (2011 ADJ.) MURRAY COUNTY COORDINATES

N= 147739.231 E= 461276.142 (COORDINATES ARE SHOWN AS INFORMATION ONLY, SUBJECT TO VERIFICATION.)

NORTH QUARTER CORNER OF SECTION 20, TOWNSHIP 106 NORTH,
RANGE 42 WEST OF THE 5TH PRINCIPAL MERIDIAN

- 1866 The U.S. Deputy Surveyor, J.W. Bishop, set a post in mound for the original corner.
- 1912 J.W. Woolstencraft, dated November 10, 1912, completed a survey of Section 20. The survey notes fence post on NW 1/4 line, along with distances of 2644 to the NW corner and 2641 to the NE corner of Section 20. This information is found in the Murray County Recorder's Office, Surveyor's Record Book A, on Page 228.
- 2006 Ulteig Engineers, Inc., Survey Crew found nothing and set a 5/8" rebar with cap RLS 44563.
- 2017 In July, Great River Energy Survey Crew found 5/8" rebar with cap RLS 44563, down 0.6 feet. Located the monument with GPS, removed, and excavated a 6' X 12' X 4' deep area. Found a 10" X 12" X 16" stone, 4 feet below the road surface and at original grade. The monument set was not called out from Woolstencraft's survey, however, it is consistent with the stones set at the other corners in Section 20. Left stone as found and set a 4" X 20" Cast Iron Monument above the stone, 0.8 feet below road grade. After analysis of the record and survey information, the found stone is accepted as marking the location of this Public Land Survey Corner.